

## Selection of the Personnel



S O L U T I O N S F O R  
Y O U R B U S I N E S S

### What is EcosAgile Recruiting ?

It is an advanced solution for managing all phases of recruiting: gathering candidates through various channels, integration with agencies, headhunters and social sites, screening management, coordination and evaluation through manager Self Service functions, templates, tests/questionnaires, replies, notifications, statutory compliance, etc.

EcosAgile Recruiting is an end-to-end solution designed for immediate and effective use; it simplifies tasks through linear logic and improves your company's ability to identify and select the right candidates.

Predefined interfaces and a specific configurable integration component allow you to import and export records in any format and avoid the frequent problems with integration seen in competing solutions.

### Why EcosAgile Recruiting ?

EcosAgile Recruiting is a modern solution and one of the most complete packages available on the market today; unlike its competitors, it features a **unique level of flexibility to handle specific current needs and future requirements** with ease, without worrying about complicating upgrade procedures and in the certainty that your investment is always improving over time.

The data can be easily loaded from xls files and all your information can always be exported at any time with a single click, without any complication.

It is seamlessly integrated with all the other products in the EcosAgile suite, for immediate interaction with any other required processes.

### Who is it designed for

It is for private or public companies, associations and employment agencies who want to improve the quality and efficiency of their current recruiting processes.

EcosAgile is innovative and complete and will help you to attain the missing skills that provoke inefficiencies and limitations in your current operations.

**Don't make any decisions without having assessed why EcosAgile Recruiting is so different.**

# EcosAgile Recruiting

“ a new approach to the Selection of Personnel ”

## REQUIREMENTS PLANNING

- Collecting requirements
- Job Requisitions
- Positions vacant

## SELECTION MANAGEMENT

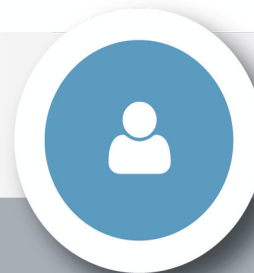
- Recruiting channels
- Job posting on company website
- Candidature alerts
- Integration with employment agencies
- Curriculum archive



REQUIREMENTS  
PLANNING



SELECTION MANAGEMENT



INTERVIEW  
MANAGEMENT



REPORTING / ANALYTICS

## REPORTING / ANALYTICS

- Reminders / notifications
- Performance / KPI

## INTERVIEW MANAGEMENT

- Planning / interview calendar
- Pre-screening
- Regulatory checks
- Job interviews / Tests
- Offers / Replies / Letters

# ENTERPRISE SOLUTIONS

“ immediate solutions, powerful and customizable  
with excellent performance at an unbeatable price ”



## INNOVATIVE solutions

### A unique and innovative platform

F O R E N T E R P R I S E




The EcosAgile platform is based on an innovative technology that manages objects and relationships through a configuration approach, without complex and expensive project, programming and testing phases.

The product can be customized with simplicity and functionality is constantly improved. A unique feature is the fact that **customizations and release upgrades coexist without additional costs and risks**, adding value to the investment over time.

The same end user can manage changes over time in a simple and autonomous fashion, without any programming.

The **solution** is fully **web based** and is delivered in **Cloud/SaaS mode** or in **on-Premise/License Agreement mode**.

### Advantages

-  Extraordinarily flexible and easy to use
-  Complete and integrated, even with existing company software and always updated to the latest version
-  Quality for Total Cost of Ownership that competitors cannot match



#### MAXIMUM ACCESSIBILITY, WEB 2.0

Easy extension of the information/procedures to management and staff through the Self-Service functions and workflows already bundled in the standard product.



#### NATIVE HANDLING DEPTH HISTORICAL DATA

The correlation between the current and historical information is handled natively by the package, with significant benefits in terms of lower cost, higher quality and better integrity of the information managed.



#### POWERFUL AND STATE OF THE ART

Multi-company, multi-country, multi-language (including Unicode management) and multi-currency. Careful security/privacy management. Powerful workflow engine.



#### MAXIMUM WEALTH OF INFORMATION

Any report, list or grid can be exported to excel. Default charts, flexible analyses and analytics rapidly provide all the information needed to work with your business data.